

# Product Catalogue

Melbourne



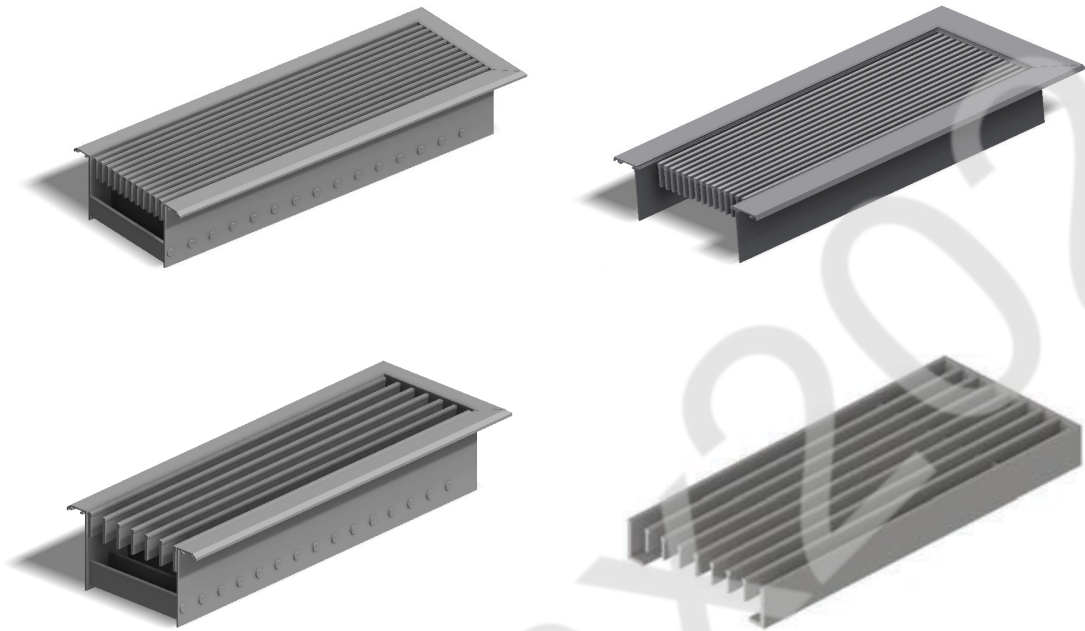
**PRODUCT CATALOGUE**

We Are Not Cool, Unless Your Are Cool!





## LINEAR BAR GRILLES



### DESCRIPTION

Airlinx Linear Bar Grilles are designed for high performance applications and have been engineered to provide outstanding performance and versatility for air distribution in Supply Air, Return Air and Exhaust Air applications.

With an aesthetically pleasing design, Linear Bar Grilles are suitable for installation in Sidewall, Ceiling and Floor applications.

Airlinx have a wide range of core and frame style options providing versatility for all design and installation applications.

Linear Bar Grilles can be installed as individual sections or in a continuous line.

Typical installations are for residential, commercial and retail applications including homes, apartments, offices, hospitals, shops, hotels and restaurants.



## LINEAR BAR GRILLES

### CONSTRUCTION

All Airlinx Linear Bar Grilles are manufactured from high quality extruded aluminum.

Standard stock sizes are available, however due to the multiple core, blade and frame style options available these are made to order in our factory.

### CORE OPTIONS

Airlinx Linear Bar Grilles can be manufactured with a Fixed or Hinged Core and also with a filter where required for Return Air Applications.

### ACCESSORIES

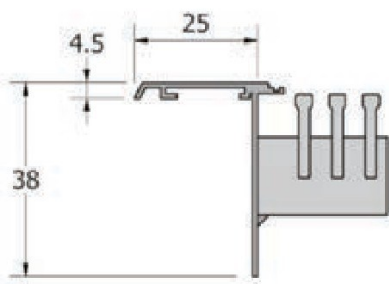
Available with optional opposed blade dampers, plain and insulated header boxes.

### FINISH

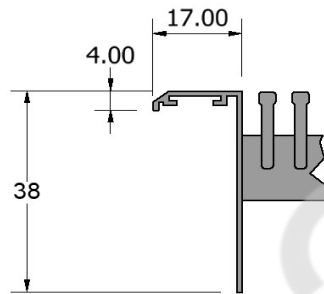
Available as standard in White Powder Coat Finish.  
Other Powder Coat finishes are also available.

## FRAME STYLE OPTIONS

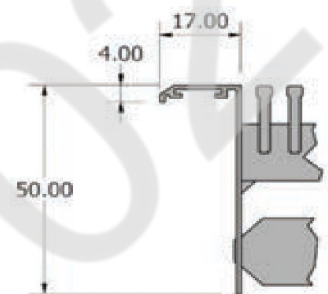
**TYPE 1**



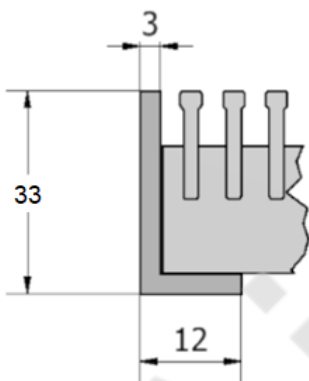
**TYPE 2A**



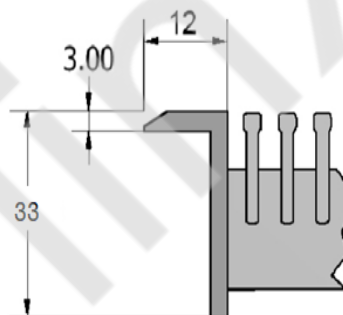
**TYPE 2B**



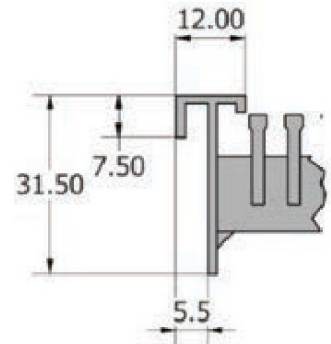
**TYPE 3A**



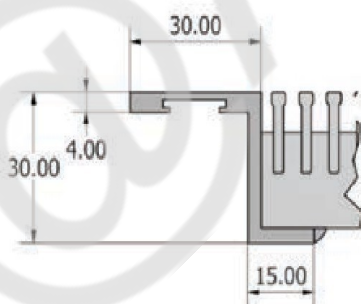
**TYPE 3B**



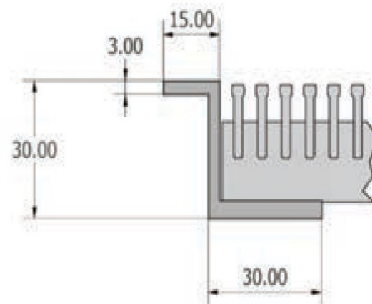
**TYPE 4**



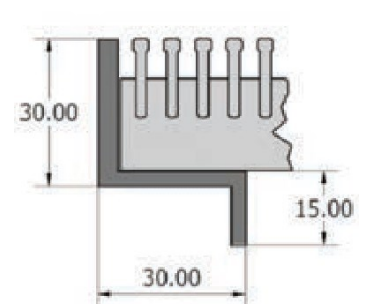
**TYPE 5A**



**TYPE 5B**



**TYPE 5C**



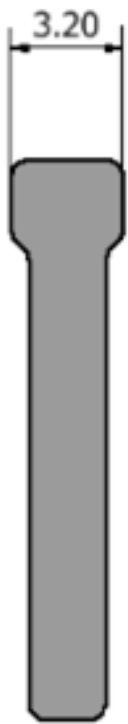
## BLADE PROFILE OPTIONS

0 DEGREE

15 DEGREE

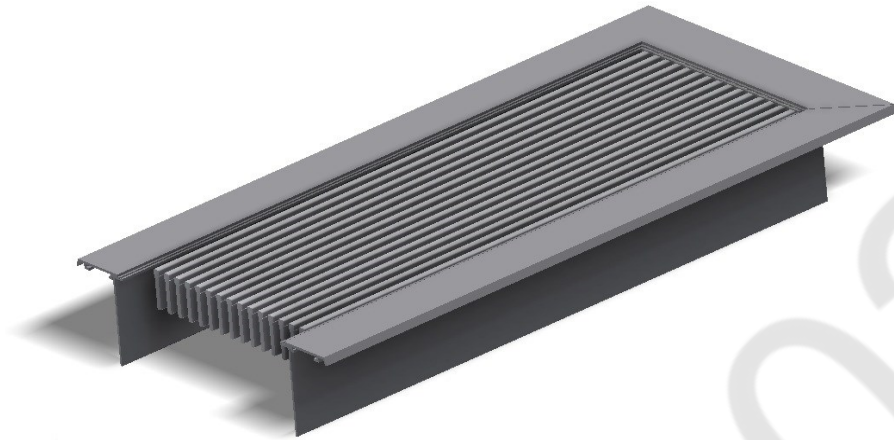
0 DEGREE HVY

30 DEGREE HVY



Grille Type	Optional Blade Types	Blade Spacing	Blade Deflection	Frame Type	Core Options	Grille Finish	Grille Neck Size (WxH)
G-B	-	6	00	1	-	WHITE	3000x150
	H	12	15	2/A/B	H	RAW	(Input Size)
	A	25	30	3/A/B	HF	(Other Dulux Colours)	
				4			
				5/A/B/C			





## LINEAR BAR GRILLE: G-B600

### DESCRIPTION

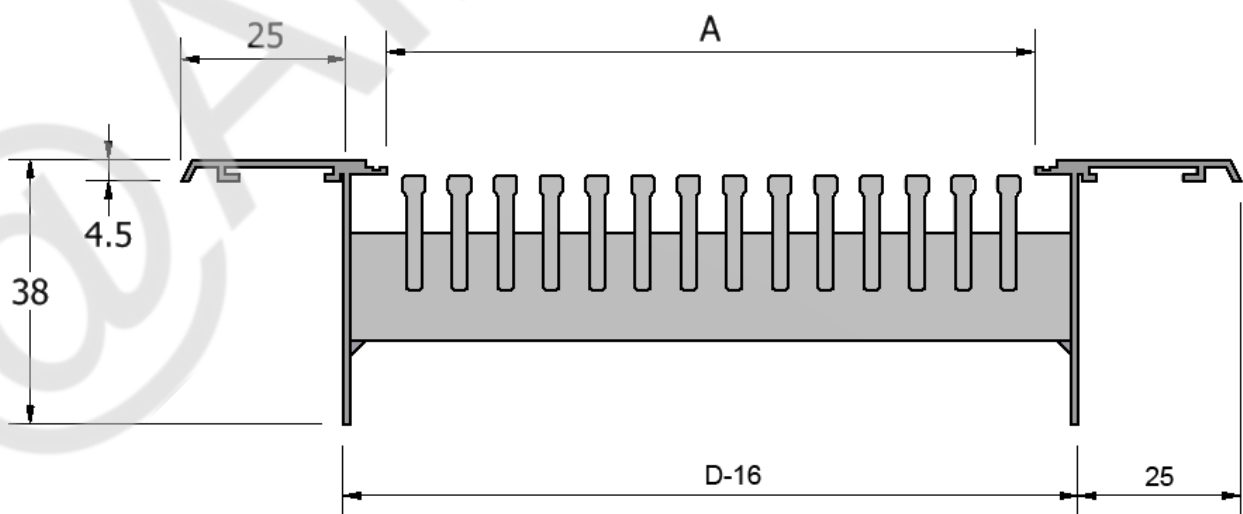
Slimline Bar Grille with Narrow Blade Spacing

6.35mm Blade Spacing

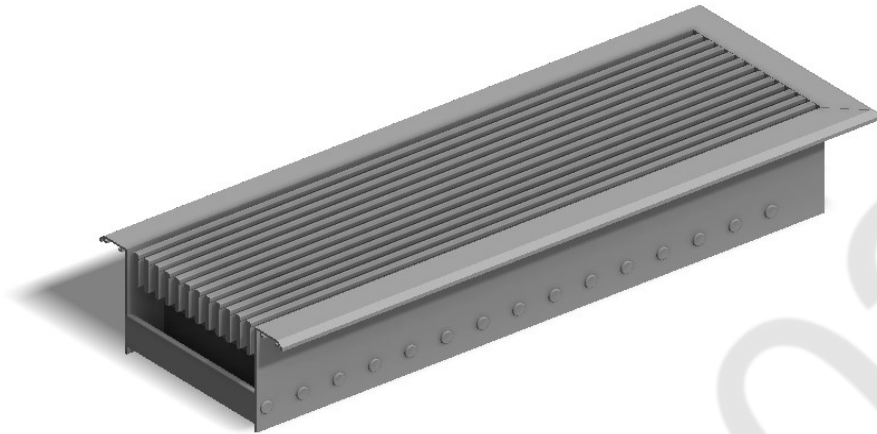
3.2mm Blade Width

0 Degree Deflection

[Frame Style Options](#)\*: Type 1A, Type 2A, Type 3A, Type 3B, Type 4A



\* see page 6 for additional details



## LINEAR BAR GRILLE: G-BA600

### DESCRIPTION

Same as [G-B600](#) however with additional Rear Adjustable Blades allowing air-flow to be directed horizontally, left and right at 0-90°

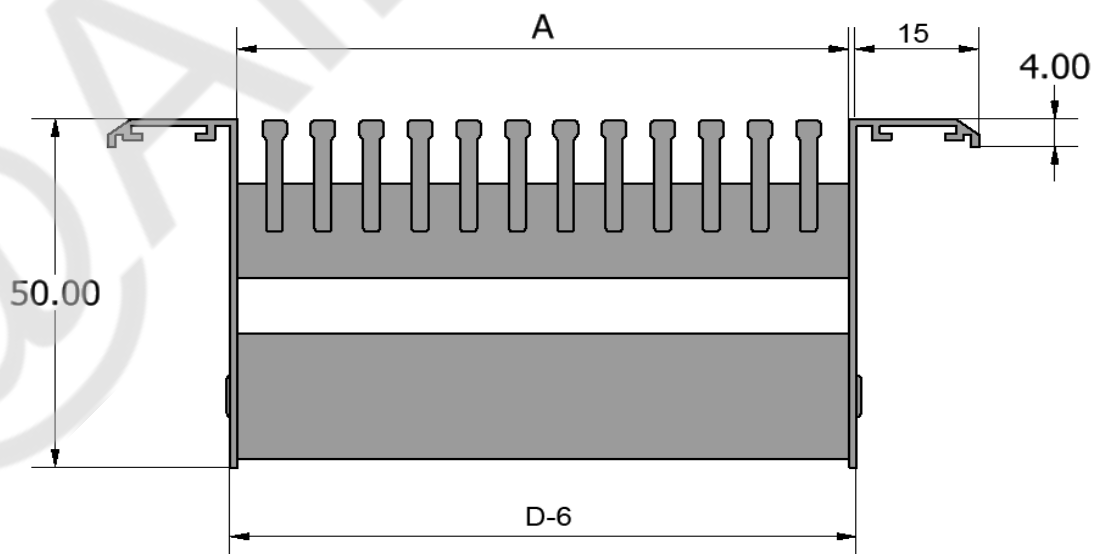
6.35mm Blade Spacing

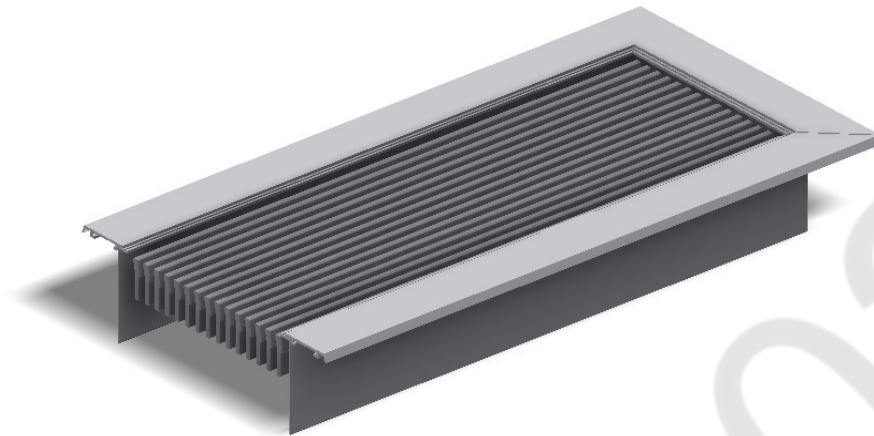
3.2mm Blade Width

0 Degree Blade Deflection

Front Blades Fixed

[Frame Style Options](#)\*: Type 2B





## LINEAR BAR GRILLE: G-B615

### DESCRIPTION

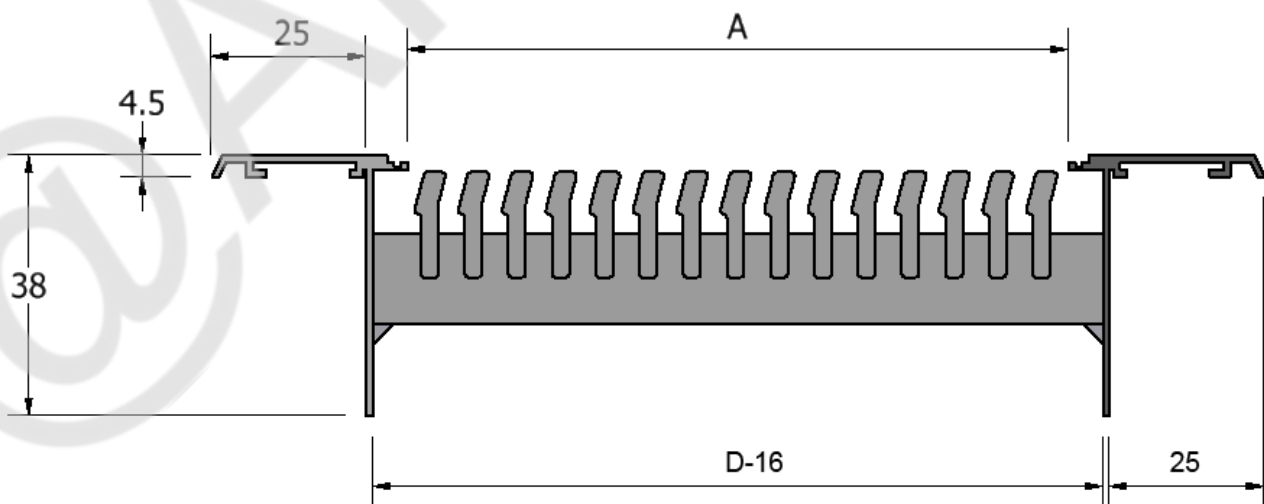
Slimline Bar Grille with Narrow Blade Spacing

6.35mm Blade Spacing

3.2mm Blade Width

15 Degree Blade Deflection

[Frame Style Options](#)\*: Type 1A, Type 2A, Type 3A, Type 3B, Type 4A



\* see page 6 for additional details





## LINEAR BAR GRILLE: G-BA615

### DESCRIPTION

Same as [G-B615](#) however with additional Rear Adjustable Blades allowing air-flow to be directed horizontally, left and right at 0-90°

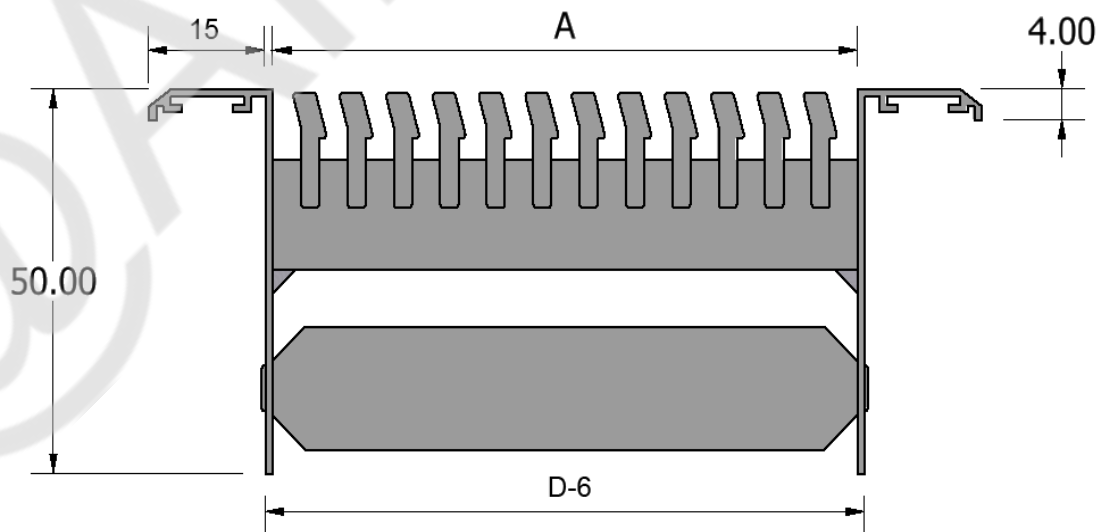
6.35mm Blade Spacing

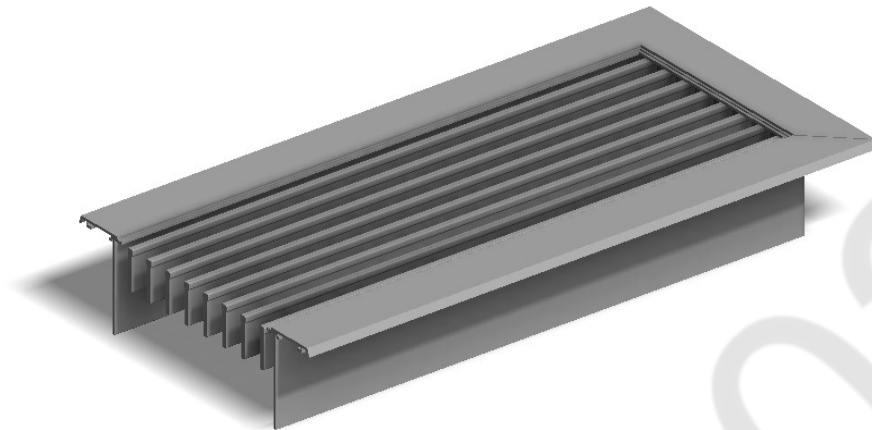
3.2mm Blade Width

15 Degree Blade Deflection

Front Blades Fixed

[Frame Style Options](#)\*: Type 2B





## LINEAR BAR GRILLE: G-B1200

### DESCRIPTION

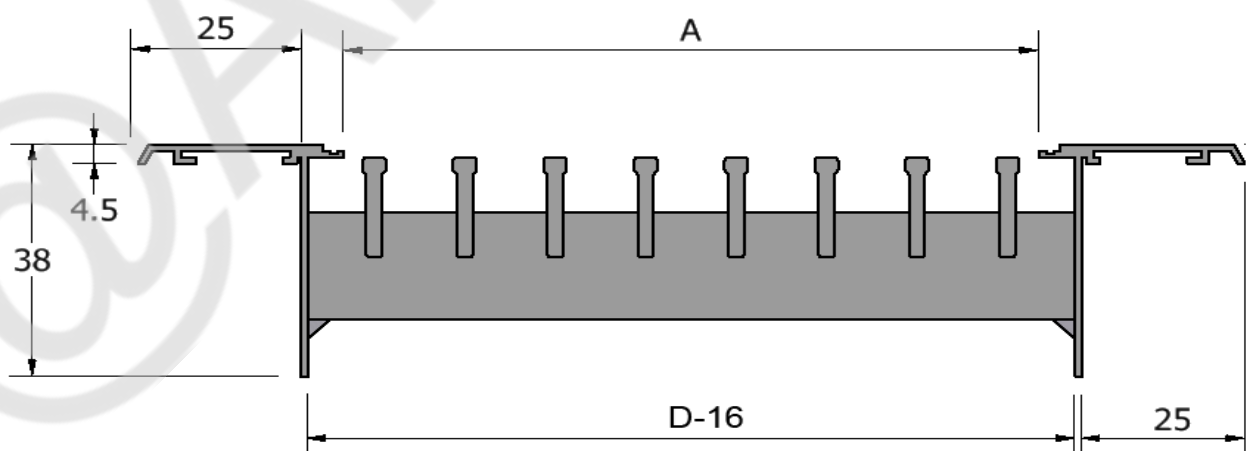
Slimline Bar Grille with Standard Blade Spacing

12.5mm Blade Spacing

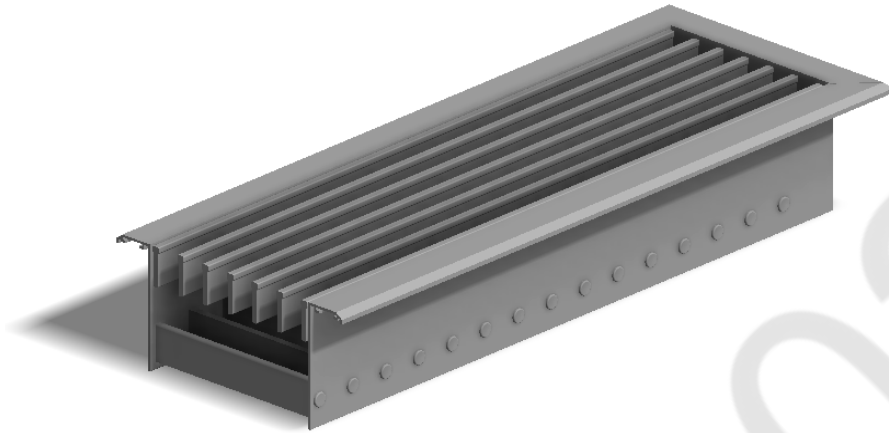
3.2mm Blade Width

0 Degree Blade Deflection

[Frame Style Options](#)\*: Type 1A, Type 2A, Type 3A, Type 3B, Type 4A



\* see page 6 for additional details



## LINEAR BAR GRILLE: G-BA1200

### DESCRIPTION

Same as [G-B1200](#) however with additional Rear Adjustable Blades allowing airflow to be directed horizontally, left and right at 0-90°

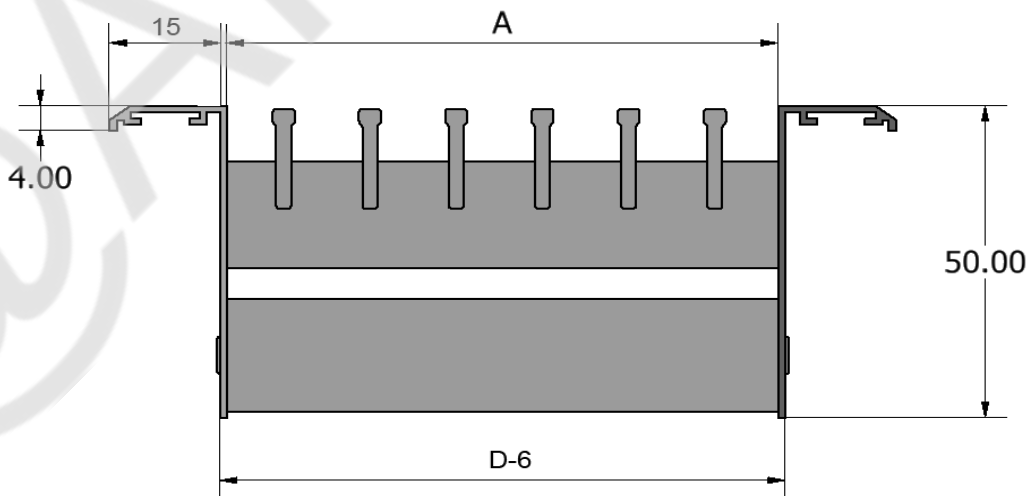
12.5mm Blade Spacing

3.2mm Blade Width

0 Degree Blade Deflection

Front Blades Fixed

[Frame Style Options](#)\*: Type 2B



## LINEAR BAR GRILLE: G-B1215

### DESCRIPTION

Slimline Bar Grille with Standard Blade Spacing

12.5mm Blade Spacing

3.2mm Blade Width

15 Degree Blade Deflection

[Frame Style Options](#)\*: Type 1A, Type 2A, Type 3A, Type 3B, Type 4A

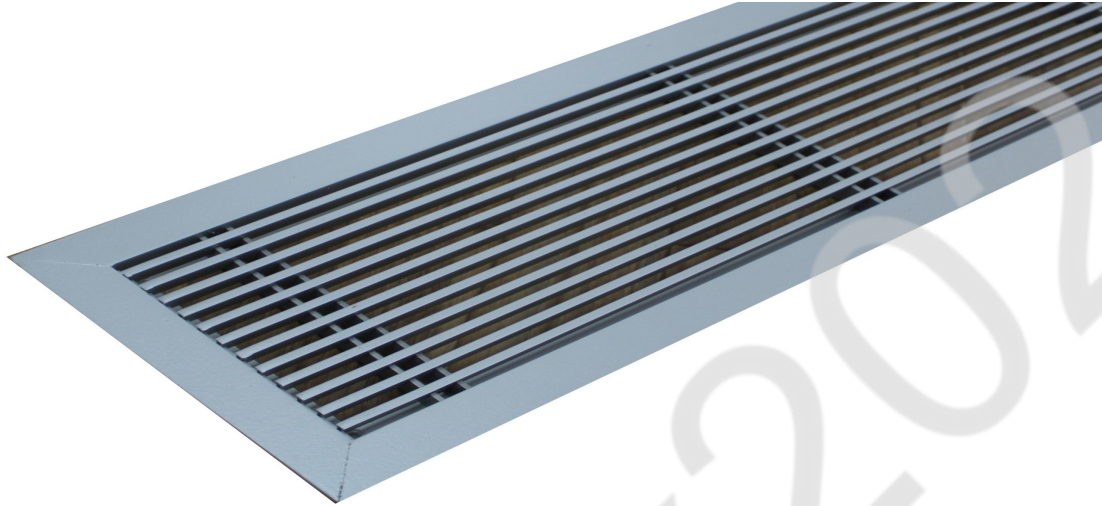
\* see page 6 for additional details



@Airlinx2024



## HEAVY DUTY FLOOR GRILLE



### DESCRIPTION

Airlinx Linear Heavy Duty Floor Grilles are designed for high performance applications and have been engineered to provide outstanding performance and versatility for air distribution in Supply Air, Return Air and Exhaust Air applications.

With an aesthetically pleasing design, Airlinx Heavy Duty Floor grilles are manufactured from extruded aluminium with 5.1mm thick bars at 12.5mm spacing. Various flange styles are available to accommodate different floor systems and structures including 15mm, 30mm and flangeless. Airlinx Heavy Duty Floor Grilles can be installed as individual

sections or in a continuous line providing versatility for all design and installation applications.

Typical installations are commercial and retail applications including offices, hospitals, shops, hotels and restaurants. Heavy Duty Floor Grilles are also used for Computer Room HVAC applications. Heavy duty floor grilles are also commonly used for residential applications including homes and apartments.





## HEAVY DUTY FLOOR GRILLE

### CONSTRUCTION

All Airlinx Linear Floor Grilles are manufactured from extruded aluminum.

### CORE OPTIONS

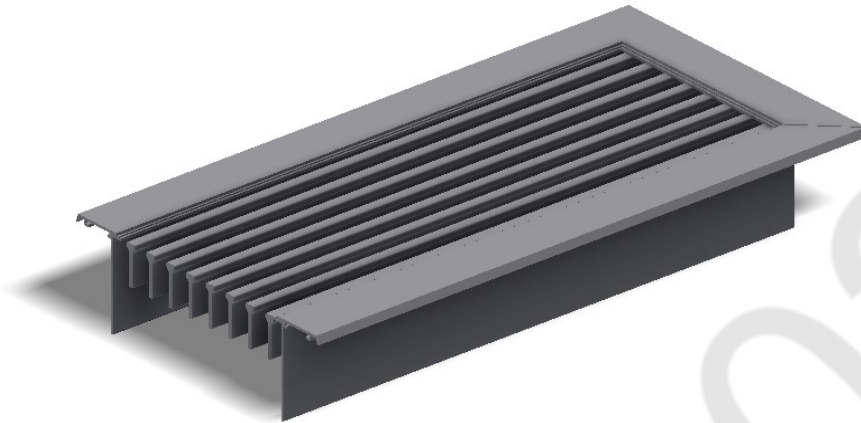
Airlinx Linear Floor Grilles can be manufactured with a Fixed core or with a filter where required for Return Air Applications.

### ACCESSORIES

Available with optional plain and insulated header boxes.

### FINISH

Available as standard in Powder Coat Finish. Other finishes also available including Anodised.



## LINEAR BAR GRILLE: G-BH1200

### DESCRIPTION

Model: G-BH1200 is designed for Wall or Floor Mounted applications where a stronger grille is required and is suitable for foot trafficable areas.

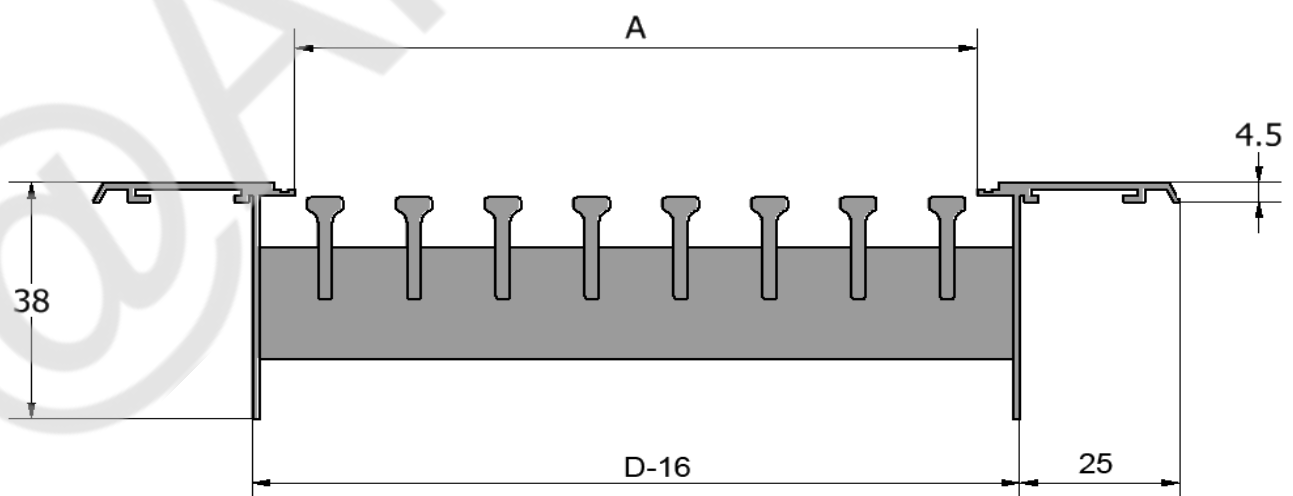
Same design as G-B1200 however the blades are of a heavier construction at 5.1mm wide x 16mm deep.

12.5mm Blade Spacing

5.1mm Blade Width

0 Degree Blade Deflection

Frame Style Options\*: Type 1A, Type 3B, Type 5A, Type 5B, Type 5C



\* see page 6 for additional details



## LINEAR BAR GRILLE: G-BH1230

### DESCRIPTION

Model: G-BH1230 is designed for Wall or Floor Mounted applications where a stronger grille is required and is suitable for foot trafficable areas.

Same design as [G-B1200](#) however the blades are of a heavier construction at 5.1mm wide x 16mm deep.

12.5mm Blade Spacing

5.1mm Blade Width

30 Degree Blade Deflection

[Frame Style Options](#)\*: Type 1A, Type 3B, Type 5A, Type 5B, Type 5C



## LINEAR BAR GRILLE: G-BH2500

### DESCRIPTION

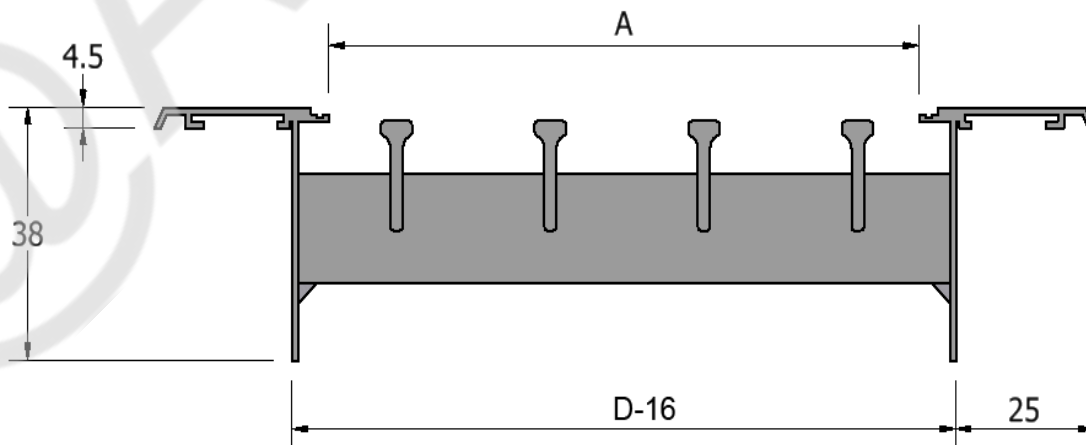
Model G-BH2500 is designed for Return and Exhaust Applications requiring a greater free area for higher air volumes. Blades are spaced at 25mm and are of heavier construction at 5.1mm wide x 16mm deep. Suitable for applications where a stronger grille is required including applications such as Car Park Exhaust Grilles or Stadium R/Air Grilles.

25mm Blade Spacing

5.1mm Blade Width

0 Degree Blade Deflection

Frame Style Options\*: Type 1A, Type 3B, Type 5A, Type 5B, Type 5C



\* see page 6 for additional details



## LINEAR BAR GRILLE: G-BH2530

### DESCRIPTION

Same design as G-BH2500 except the blades have a 30 degree deflection

25mm Blade Spacing

5.1mm Blade Width

30 Degree Blade Deflection

Frame Style Options\*: Type 1A, Type 3B, Type 5A, Type 5B

Grille-Grille Type	Optional Blade Type	Blade Spacing	Blade Deflection	Frame Type	Core Options	Grille Finish	Grille Neck Size (WxH)
G-B	-	6	00	1	-	WHITE	3000x150
	H	12	15	2/A/B	H	RAW	(Input Size)
	A	25	30	3/A/B	HF	(Other Dulux Colours)	
				4			
				5/A/B/C			



## LINEAR SLOT DIFFUSERS



### DESCRIPTION

Airlinx Linear Slot Diffusers are designed for high performance applications and have been engineered to provide flexibility for air distribution in Supply Air, Return Air and Exhaust Air applications.

Incorporating a 25mm slot, Linear Slot Diffusers provide an aesthetically pleasing design and are suitable for installation in Ceilings or Sidewall applications.

Linear Slot Diffusers are available with the number of slots ranging from 1 to 7. Each slot incorporates individual air pattern control blades that can be adjusted from the face of the Slot Diffuser providing 180 degree horizontal and vertical airflow pattern adjustment.

Linear Slot Diffusers can be installed as individual sections or in a continuous line and can be installed in any type of ceiling application.

Typical installations are for residential, commercial and retail applications including homes, offices, hospitals, shops, hotels, restaurants and schools.





## LINEAR SLOT DIFFUSERS

### CONSTRUCTION

All Airlinx Linear Slot Diffusers are manufactured from extruded aluminum with a removable internal pattern control blade assembly that is securely held in place with high tensile spring clips.

### CORE OPTIONS

Airlinx Linear Slot Diffusers can be manufactured with a Fixed Core

### ACCESSORIES

Available with optional mounting track, blanking plate, plain and insulated header boxes.

### FINISH

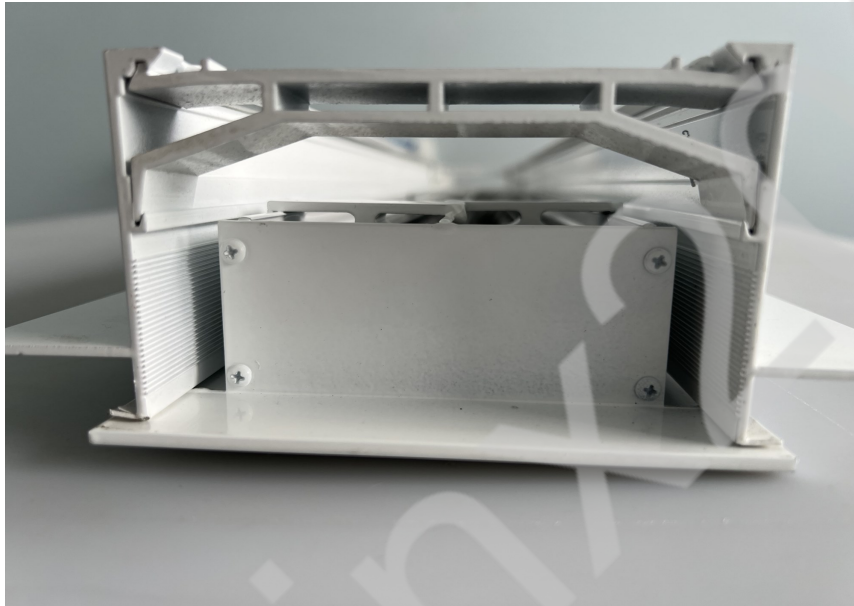
Available as standard in White Powder Coat Finish. Other Powder Coat finishes are also available.

(Note: The internal pattern control blades are black)

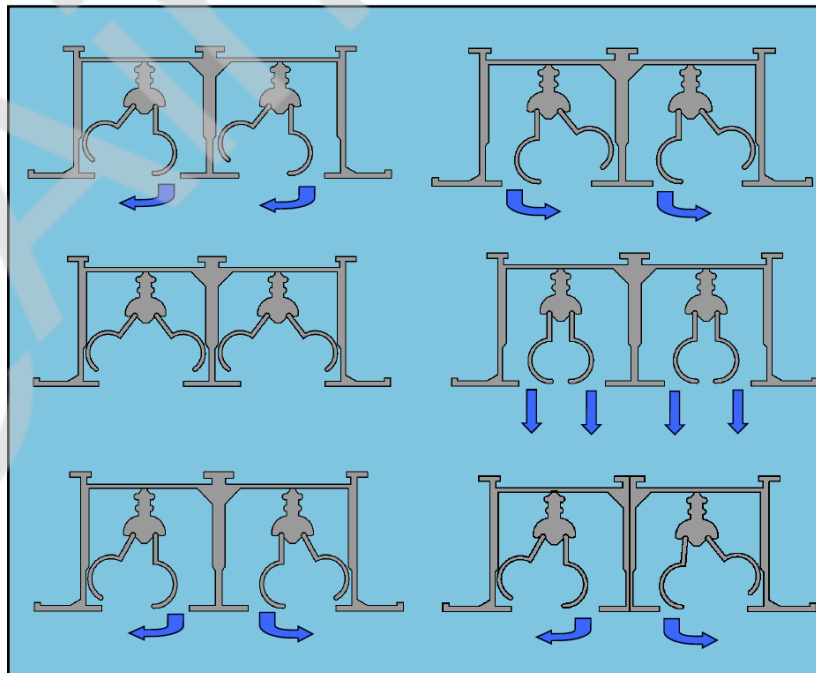


## LINEAR SLOT DIFFUSERS

### MOUNTING TRACK



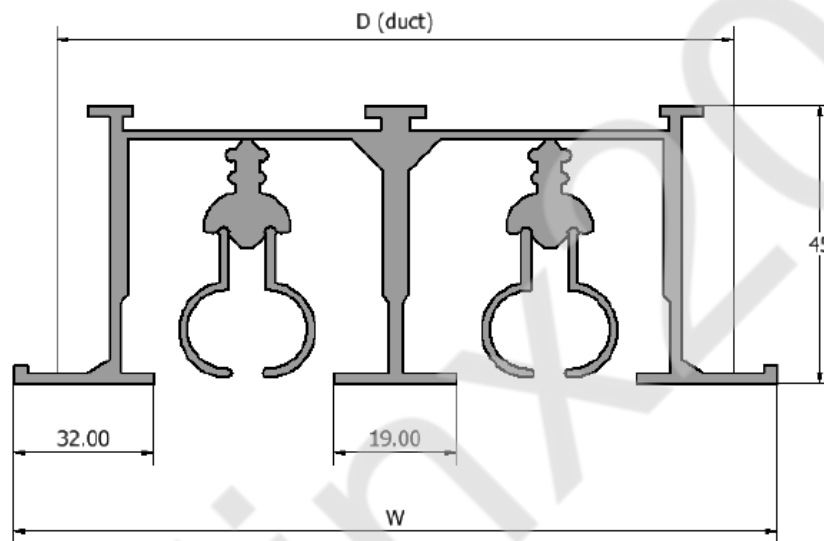
### THROW OPTIONS



*Quality and Service at an affordable price*

## LINEAR SLOT DIFFUSERS

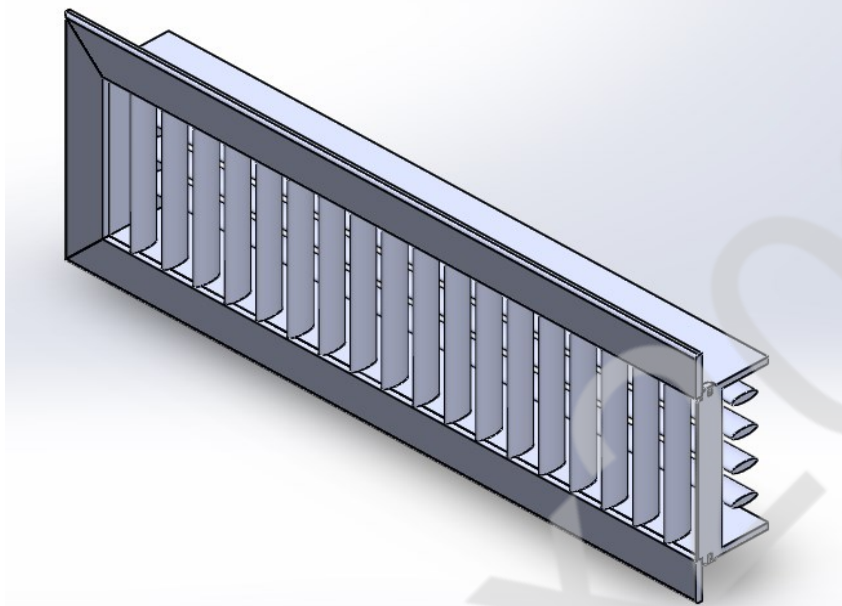
### FRAME DIMENSIONS



NO. SLOTS	G-LSD25	
	D(mm)	W(mm)
1	54	88
2	97	131
3	142	174
4	187	219
5	232	262
6	277	305
7	315	348



## DOUBLE DEFLECTION REGISTERS



### DESCRIPTION

Airlinx Double Deflection Registers (also commonly referred to as a Universal Register) are designed for Supply Air applications and are typically used in wall or duct mounted installations.

With an aesthetically pleasing design, Double Deflection Registers have two sets of fully adjustable individual blades. The front set of blades run parallel to the long dimension and the rear set runs parallel to the short dimension. Each blade is individually adjustable providing maximum flexibility for both horizontal and vertical air throw.

Airlinx have a wide range of core and frame style options providing versatility for all design and installation applications. Single Deflection Registers are also available with horizontal adjustable blades or alternatively front vertical blades.

Typical installations are for residential, commercial and retail applications including homes, apartments, offices, hospitals, shops, hotels and restaurants.



## DOUBLE DEFLECTION REGISTERS

### CONSTRUCTION

All Airlinx Double Deflection Registers are manufactured from extruded aluminum. The core consists of horizontal blades at the front complimented by rear vertical blades at the rear. The blades have an aerofoil design and each blade is individually adjustable at spacing of 20mm.

Standard stock sizes are available, and custom sizes are made to order in our factory.

### CORE OPTIONS

Airlinx Double Deflection Registers can be manufactured with a Fixed or a Removable Core.

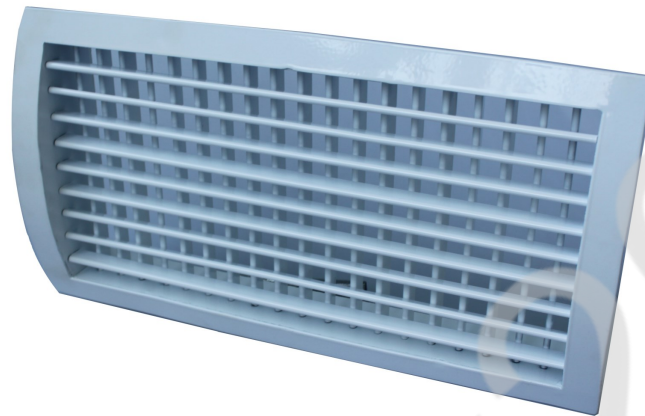
### ACCESSORIES

For accurate control of air flow, Airlinx Double Deflection Registers can be provided with optional Opposed Blade and Stream Splitter Dampers in addition to plain or insulated plenum boxes

### FINISH

Available as standard in White Powder Coat Finish. Other Powder Coat finishes are also available.

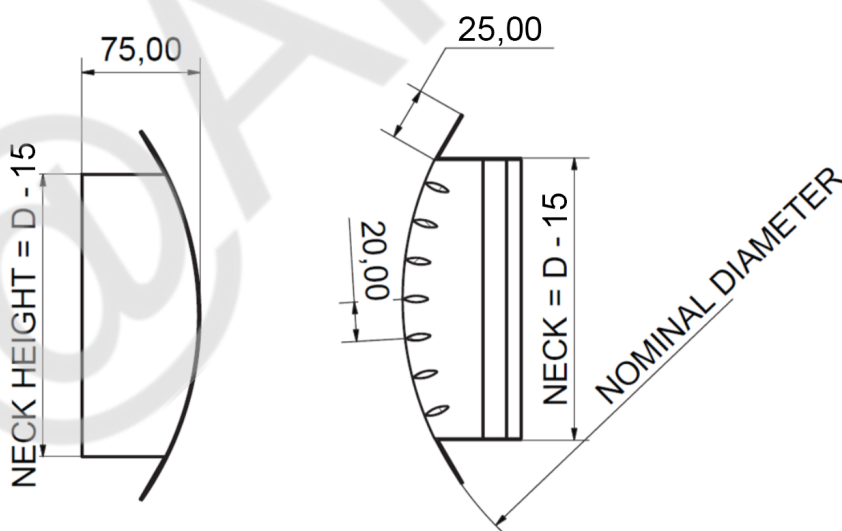
## CURVED DOUBLE DEFLECTION REGISTERS



### DESCRIPTION

Double Deflection Registers (along with Single Deflection) can be manufactured with a Curved Face to suit installations into Circular or Oval Spiral Ductwork

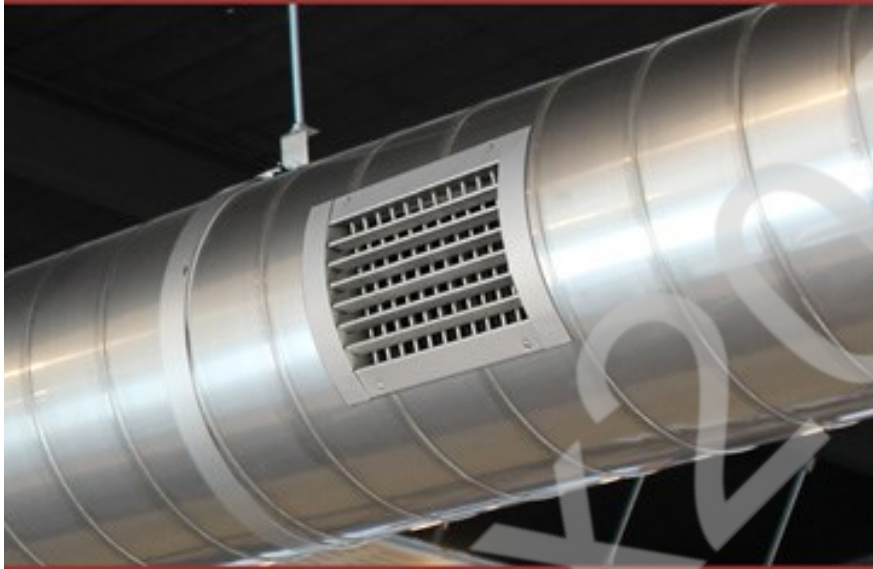
### FRAME DIMENSIONS







## CURVED DOUBLE DEFLECTION REGISTERS

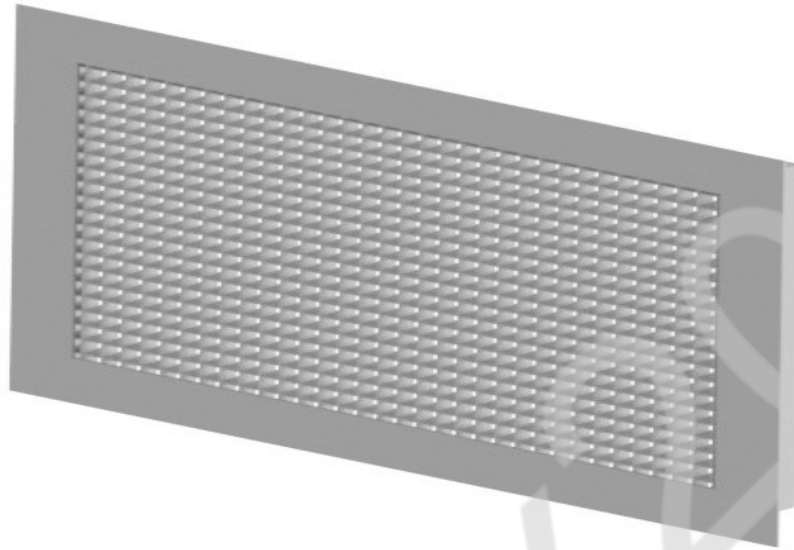


*522 Princes Hwy, Noble Park North, Victoria 3174*

*Tel: 03 9790 0900 Email: [Info@airlinx.com.au](mailto:Info@airlinx.com.au)*



## EGG CRATE GRILLES



### DESCRIPTION

Airlinx Egg Crate Grilles are a high free area grille (90%) specifically designed for Return Air, Transfer / Relief Air and Exhaust Air applications. Egg Crate grilles are typically used in ceiling, wall and duct mounted installations.

Airlinx have a wide range of core and frame style options providing versatility for all design and installation applications.

Typical installations are for residential, commercial and retail applications including homes, apartments, offices, hospitals, shops, hotels and restaurants.

### CONSTRUCTION

Airlinx Egg Crate Grilles are manufactured from an extruded aluminum frame and the core is comprised of an aluminum lattice with each square measuring 12.5mm in length and 12.5mm in depth.

Standard stock sizes are available for R/Air, Transfer, Exhaust Grilles, and custom sizes are made to order in our factory.



## EGG CRATE GRILLES

### CORE AND FRAME OPTIONS

Airlinx Egg Crate Grilles can be manufactured as Core Only, Fixed Core, along with Removable and / or Hinged Core with (or without) the removable filter

Standard flange is 25mm and a U channel is used on Removable and Hinged Core options

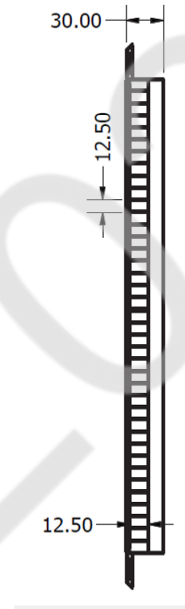
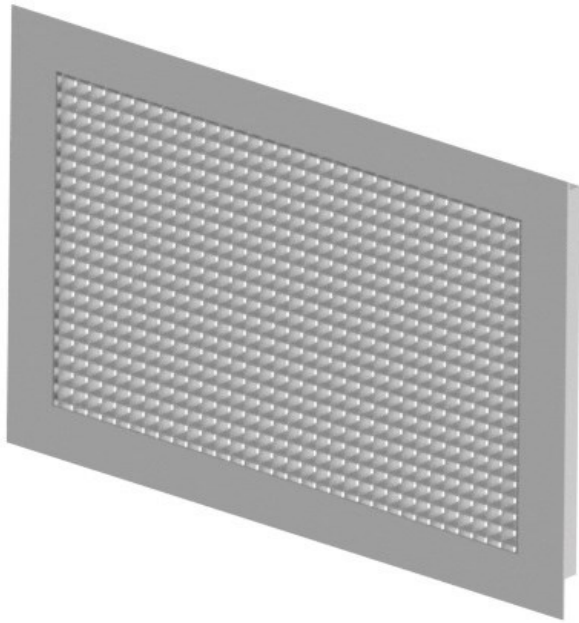
### ACCESSORIES

For accurate control of air flow, Airlinx Egg Crate Grilles can be provided with optional Opposed Blade Dampers, Mounting Frames, Adapters and plain or insulated Plenum Boxes.

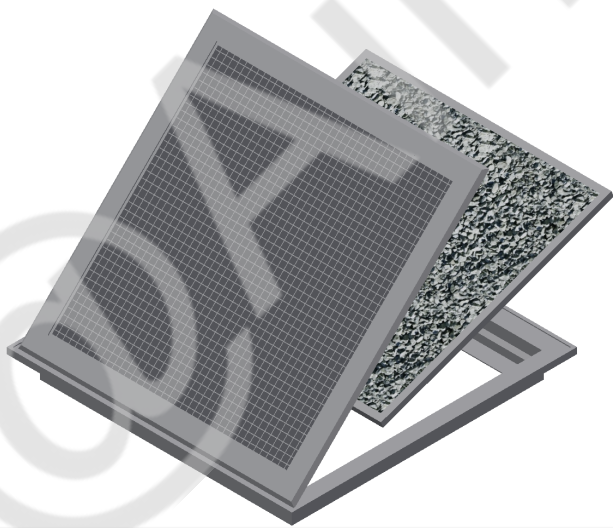
### FINISH

Available as standard in Mill Finish, Natural Anodised or White Powder Coat Finish. Other Powder Coat finishes are also available.

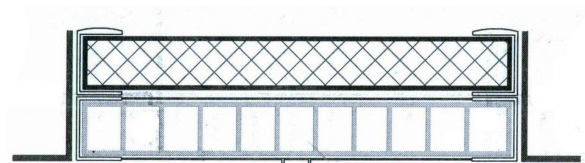
## EGG CRATE CORE



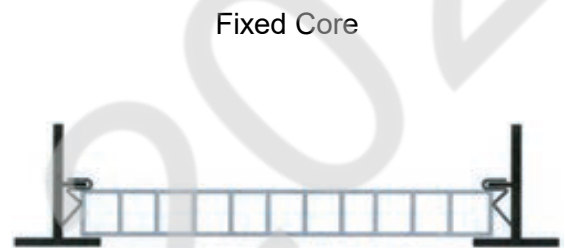
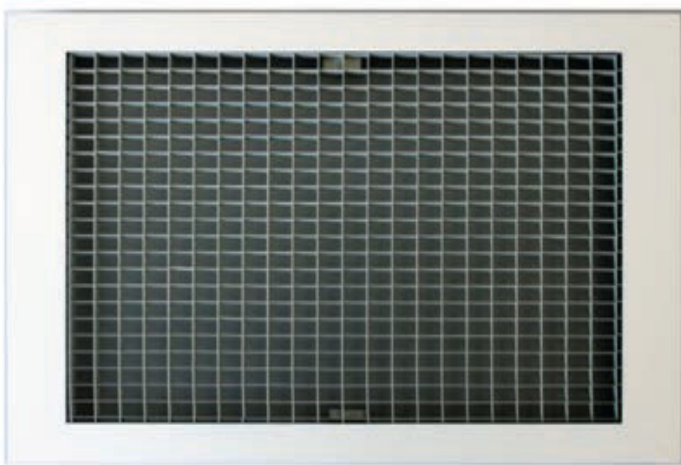
## EGG CRATE GRILLE HINGED CORE WITH FILTER



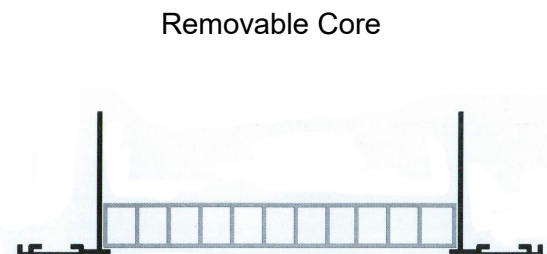
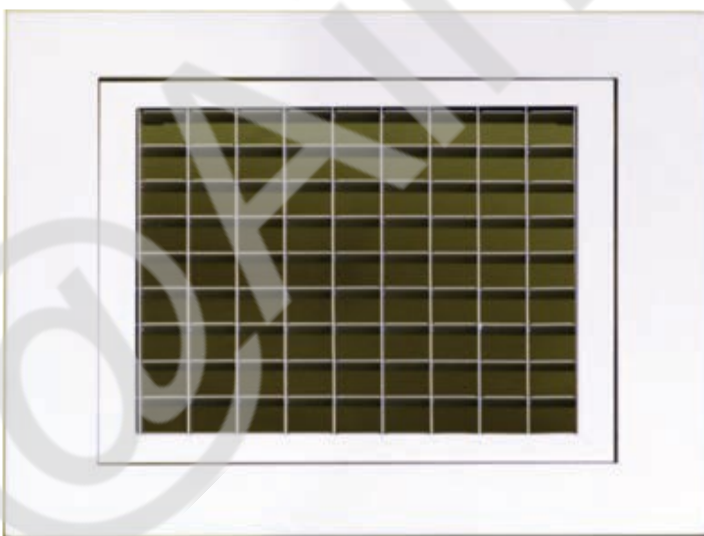
Hinged Core with Filter



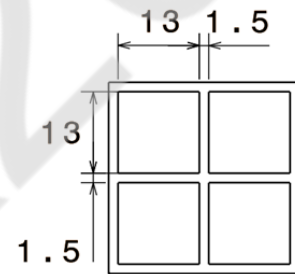
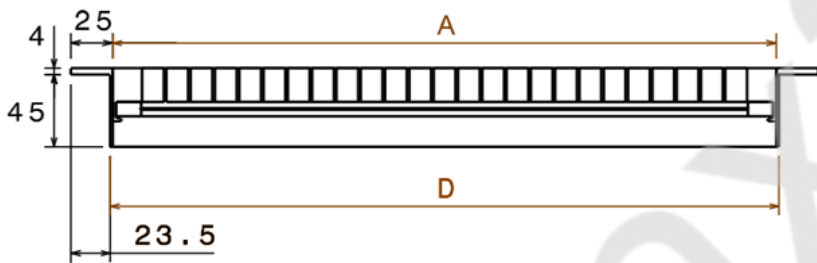
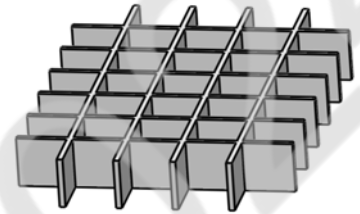
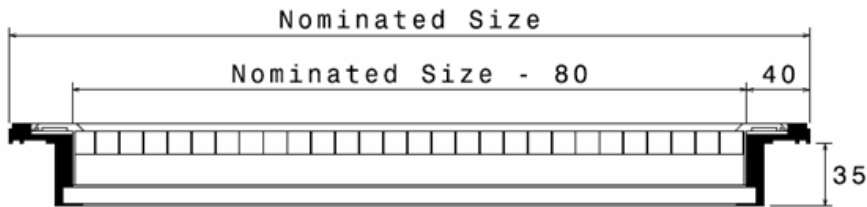
## EGG CRATE GRILLE PLAIN FIXED CORE



## EGG CRATE GRILLE REMOVABLE CORE



## CORE DIMENSIONS







@Airlinx2024



## DOOR GRILLES



### DESCRIPTION

Door Grilles are designed for mounting in Doors and can also be installed in walls and partitions. They are used primarily for air transfer and relief applications and provide an aesthetic non-vision appearance. Typical installations are for commercial, retail and industrial applications including offices, hospitals, shops, hotels, restaurants and schools.

### CONSTRUCTION

Door Grilles are manufactured from aluminum extrusion with a 25mm wide flanged frame that contains inverted full chevron blades which provide the vision proof internal core. A matching backing frame provides a rear telescopic secure fitment to a door with a range of thicknesses from 30-50mm.

Standard stock sizes are available with a standard width of 600mm and custom sizes can be made to order



## DOOR GRILLES

### CORE OPTIONS

Airlinx Linear Floor Grilles can be manufactured with a Fixed core

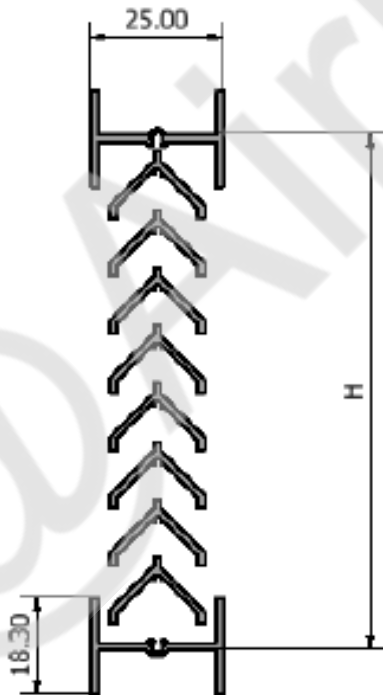
### ACCESSORIES

Available with optional plain and insulated header boxes.

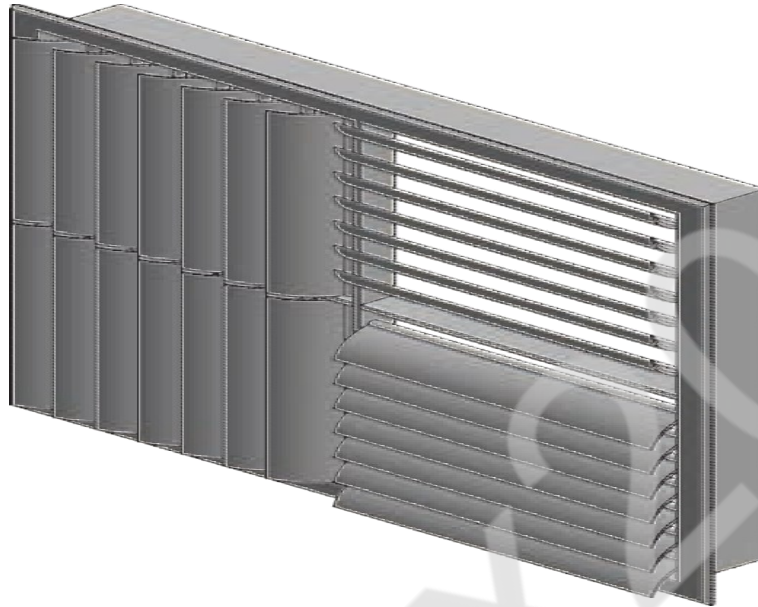
### FINISH

Available as standard in Anodised. Other Powder Coat finishes also available.

### FRAME DIMENSIONS



## EYELASH GRILLES



### DESCRIPTION

Curved Blade Diffusers (Eyelash Grilles) are designed for Supply Air applications in Ceilings and are available with a 1, 2, 2 and 4 Way Blow pattern. Curved Blade Diffusers (Eyelash Grilles) are commonly used in Evaporative Cooling Systems and provide a very versatile distribution pattern and excellent diffusion characteristics to suit the spatial layout of the room.

Typical installations are for residential, commercial, retail and industrial applications including homes, offices, hospitals, shops, hotels, restaurants and



## EYELASH GRILLES

### CONSTRUCTION

Curved Blade Diffusers (Eyelash Grilles) are manufactured from extruded aluminum with internal adjustable curved blades that are securely held in place with high tensile spring wire. The surround frame is suitable for lay-in ceiling applications and for surface mounting in plasterboard or similar ceilings.

Standard stock sizes are available, however due to the multiple blow patterns and size configurations available these are made to order in our factory. Please refer to table of Air Patterns.

### CORE OPTIONS

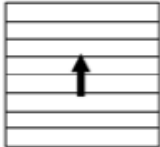


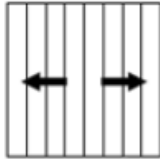


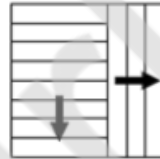


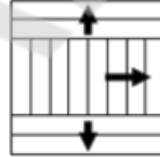


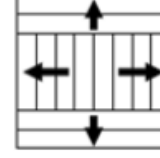

Curved Blade Diffusers (Eyelash Grilles) can be manufactured with a fixed core

### FINISH

Available as standard in White Powder Coat Finish. Other Powder Coat finishes are also available.

## EYELASH GRILLES

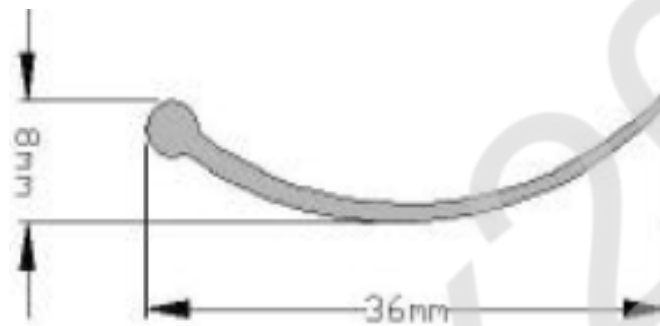
### AIR PATTERNS

Order Pattern	Square	Rectangular	
1-Way			
2-Way Opposite			
2-Way Corner			
3-Way			
4-Way			

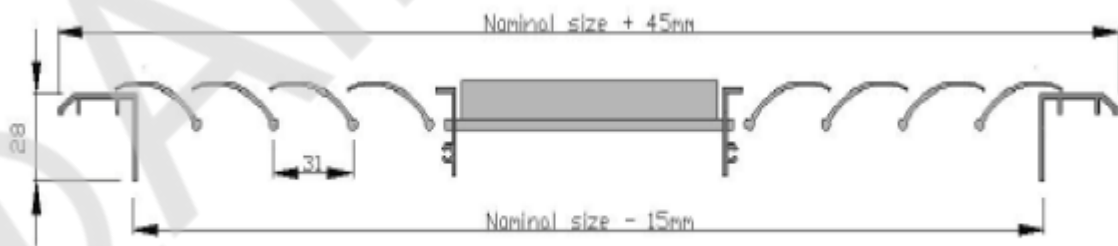


## EYELASH GRILLES

### BLADE DIMENSIONS



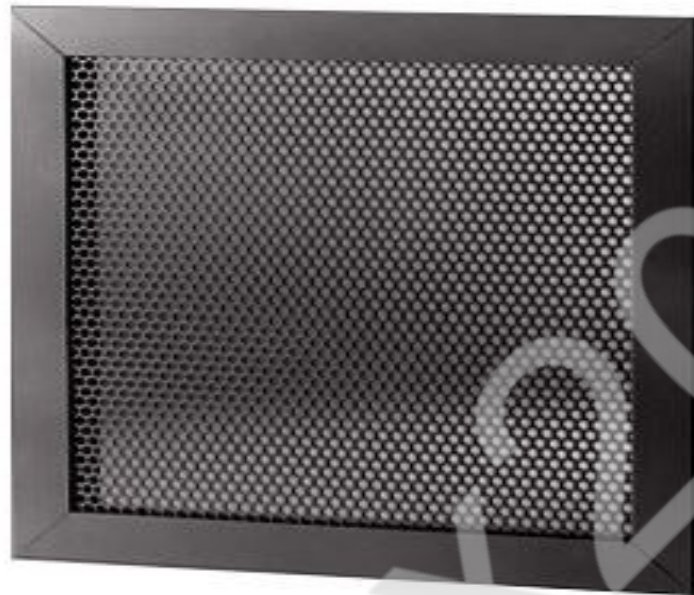
### FRAME DIMENSIONS







## PERFORATED GRILLES



### DESCRIPTION

Airlinx Perforated Grilles are commonly used for Return Air, Transfer / Relief Air & Exhaust Air applications and are typically used for ceiling mounted installations. Perforated Grilles can also be used as a Supply Air Diffuser predominantly in commercial design applications.

Where vandal proof or secure grilles are required Airlinx provide a heavier construction perforated grille designed to meet specifications for Prisons, Police Stations and similar secure environments.

Airlinx have a wide range of perforated core style options providing versatility for all design and installation applications.

Typical installations are for commercial and industrial applications including offices, hospitals, prisons, police stations and secure facilities. Decorative perforated grilles are also available for residential applications.



## PERFORATED GRILLES

### CONSTRUCTION

Airlinx standard Perforated Grilles are manufactured from an extruded aluminum frame. The core consists of 50 % free area perforated metal with circular staggered perforations.

Security Perforated Grilles are manufactured from fully welded steel frames and heavy perforated metal. (Note: thickness and free area varies according to specification on project)

Perforated Grilles are made to order in our factory.

### CORE OPTIONS

Airlinx Perforated Grilles can be manufactured with a Fixed Core along with Removable and / or Hinged Core with (or without) removable filter.

### ACCESSORIES

For accurate control of air flow, Airlinx Perforated Grilles can be provided with optional Opposed Blade and other accessories including Mounting Frames, Adapters and plain or insulated Plenum Boxes.

### FINISH

Available as standard in White Powder Coat Finish. Other Powder Coat finishes are also available.

### AIRLINX PROVIDES CUSTOM PERFORATION



## HALF CHEVRON LOUVRE



### DESCRIPTION

Airlinx Half Chevron Louvres are designed for Return Air, Transfer / Relief Air & Exhaust Air applications and are typically used in wall, ceiling or duct mounted installations.

Airlinx have a wide range of core and frame style options providing versatility for all design and installation applications.

Typical installations are for residential, commercial and retail applications including homes, apartments, offices, hospitals, shops, hotels and restaurants.



## HALF CHEVRON LOUVRE

### CONSTRUCTION

Airlinx Half Chevron Louvres are manufactured from extruded aluminum. The core consists of fixed horizontal louvre blades set at 45 degrees.

Half Chevron Louvres are made to order in our factory.

Free area: 25%-58% (depending on the height).

### CORE OPTIONS

Airlinx Half Chevron Louvres can be manufactured with a Fixed Core along with Removable and / or Hinged Core with (or without) removable filter.

### ACCESSORIES

For accurate control of air flow, Airlinx Half Chevron Louvres can be provided with optional Opposed Blade Dampers.

### FINISH

Available as standard in White Powder Coat Finish. Other Powder Coat finishes are also available.



## WEATHER LOUVRE



### DESCRIPTION

Airlinx Weather Proof Louvers are designed to provide weather protection of outside air or discharge air through the opening while allowing free passage of air. Airlinx Weather Proof Louvers minimise the ingress of rain water in all normal climatic conditions and are suitable for supply, relief and exhaust air applications. Weather Proof Louvers may also be used for natural ventilation

Airlinx have a wide range of core and frame style options providing versatility for all design and installation applications.

Typical installations are for residential, commercial and retail applications including homes, apartments, offices, hospitals, shops, hotels and restaurants.



## WEATHER LOUVRE

### CONSTRUCTION

From extruded aluminum sections, frame and blades 1.0mm thick. Hairline miters mechanically held. Fitted as standard with rear galvanized steel bird/vermin mesh screen for external use.

Free area: 22%-58% (depending on the height).

### CORE AND FRAME OPTIONS

Airlinx Weather Louvres can be manufactured with a Fixed Core along with Hinged Core.

2 flange sizes: 25mm, 50mm

3 blade sizes: 52mm, 75mm, 117mm

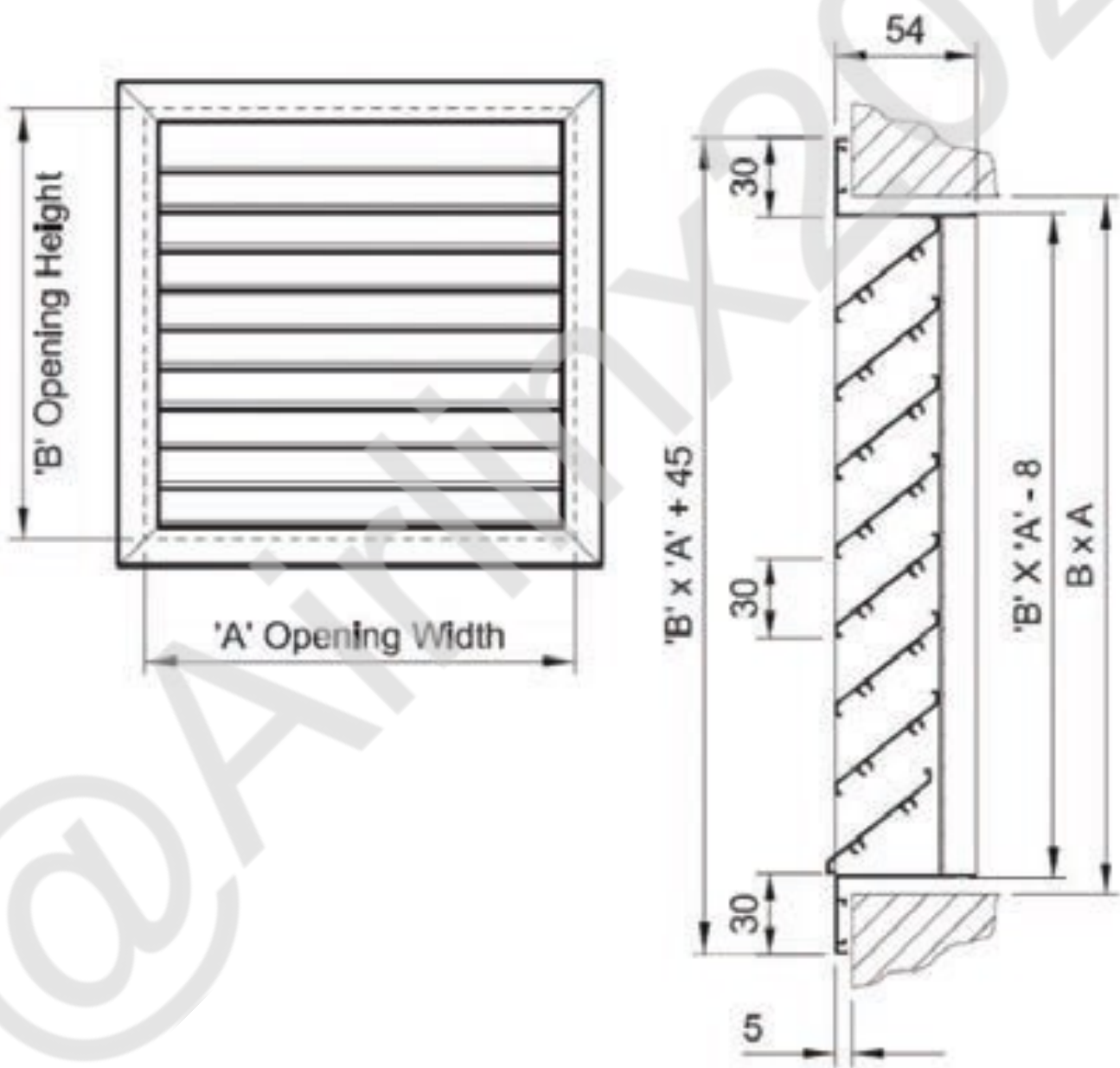
### FINISH

Available as standard in Natural Anodised / Silver Powder Coat Finish. Other Powder Coat finishes are also available.



## LOUVRES

### DIMENSIONS



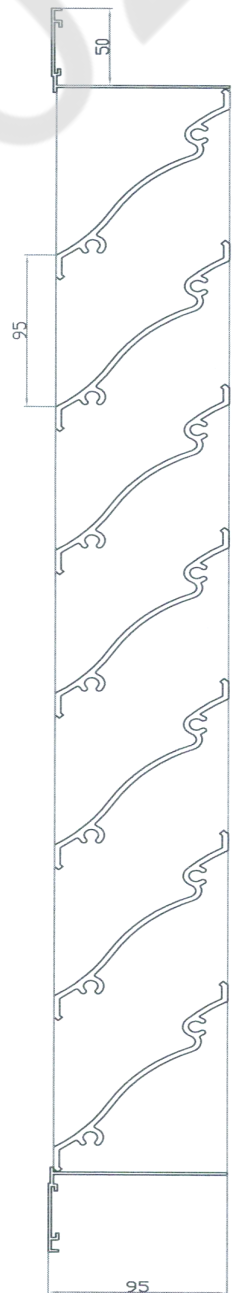
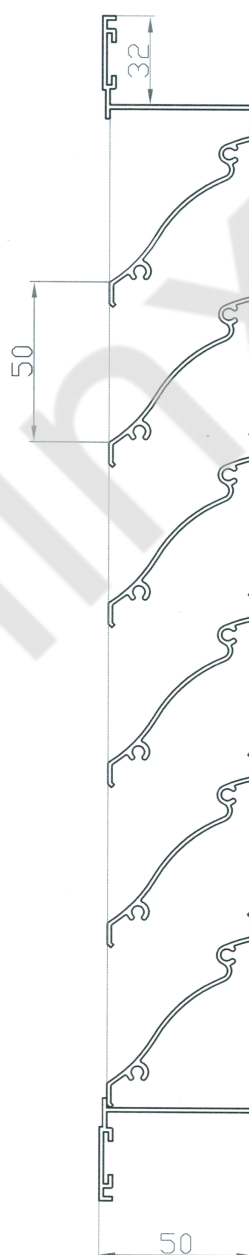
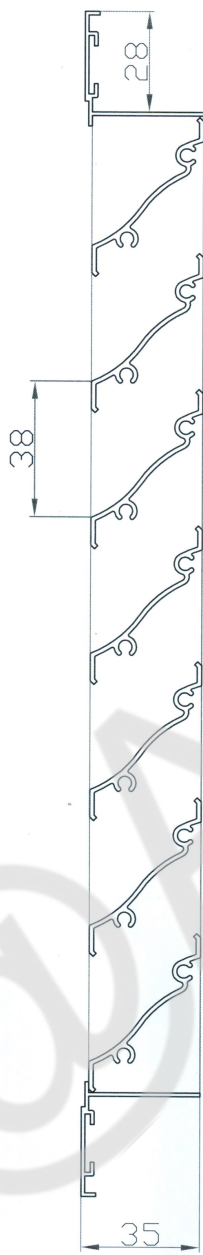
\*30mm Flange





## LOUVRES

### DIMENSIONS



Three blade sizes for Weather Louvre; 52mm, 75mm, 117mm



## 4-WAY SQUARE CEILING DIFFUSER



### DESCRIPTION

Ceiling Diffusers are designed for Supply Air applications in Ceilings and are typically provided with a 4 Way Blow pattern for an even distribution of air. Ceiling Diffusers can also be provided with internal blanking plates to achieve a 1-way, 2-way or 3-way blow distribution pattern to suit

the special layout of the room.

Typical installations are for residential, commercial, retail and industrial applications including offices, hospitals, shops, hotels, restaurants and schools.



## 4-WAY SQUARE CEILING DIFFUSER

### CONSTRUCTION

Ceiling Diffusers are manufactured from extruded aluminum with internal louvres and a frame that is suitable for lay-in ceiling applications and for surface mounting in plasterboard or similar ceilings.

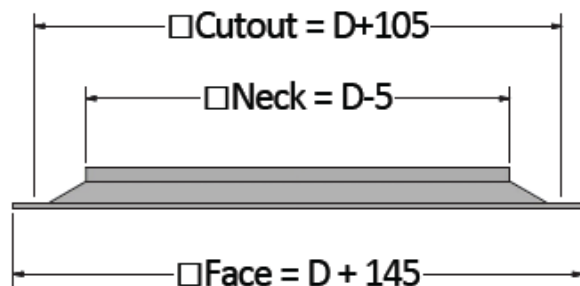
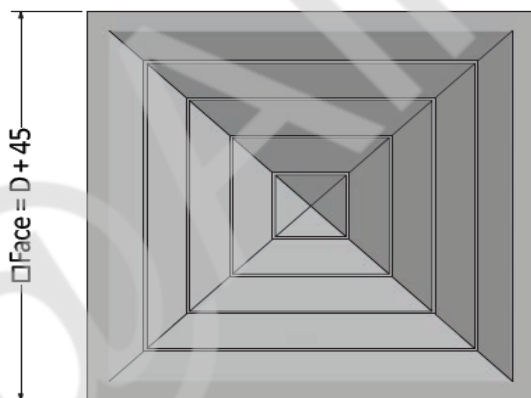
Standard stock sizes are available that include;

250/400, 300/450, 375/525, 450 / 595 (Lay-in)

### FINISH

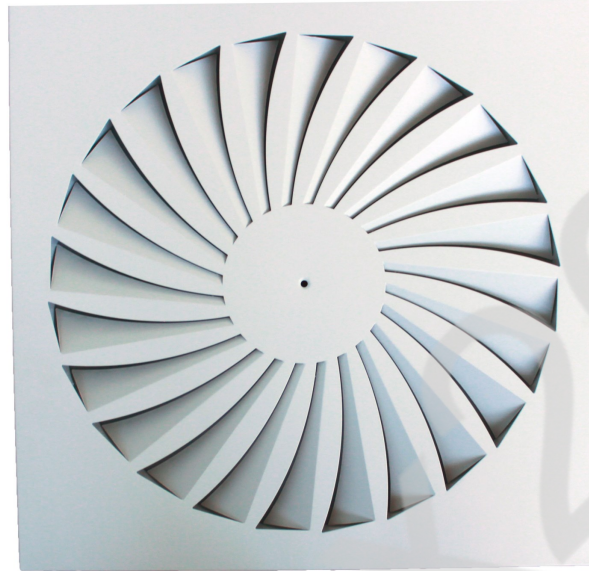
Available as standard in White Powder Coat Finish. Other Powder Coat finishes are also available.

### DIMENSIONS





## SWIRL DIFFUSER



### DESCRIPTION

Swirl Diffusers are designed for Supply Air applications in Ceilings and provide a horizontal radial distribution of air. Swirl Diffusers are very effective as they are a High Induction Diffuser which provides rapid mixing of supply and room air

Typical installations are for commercial, retail and industrial applications including offices, hospitals, shops, hotels, restaurants and schools.

High quality diffuser with radical diffusion pattern to generate airflow according to the principle of turbulent mixed airflow

Low sound level and pressure loss

Installation for prefabricated ceiling or surface mounted for closed false ceilings



## SWIRL DIFFUSER

### CONSTRUCTION

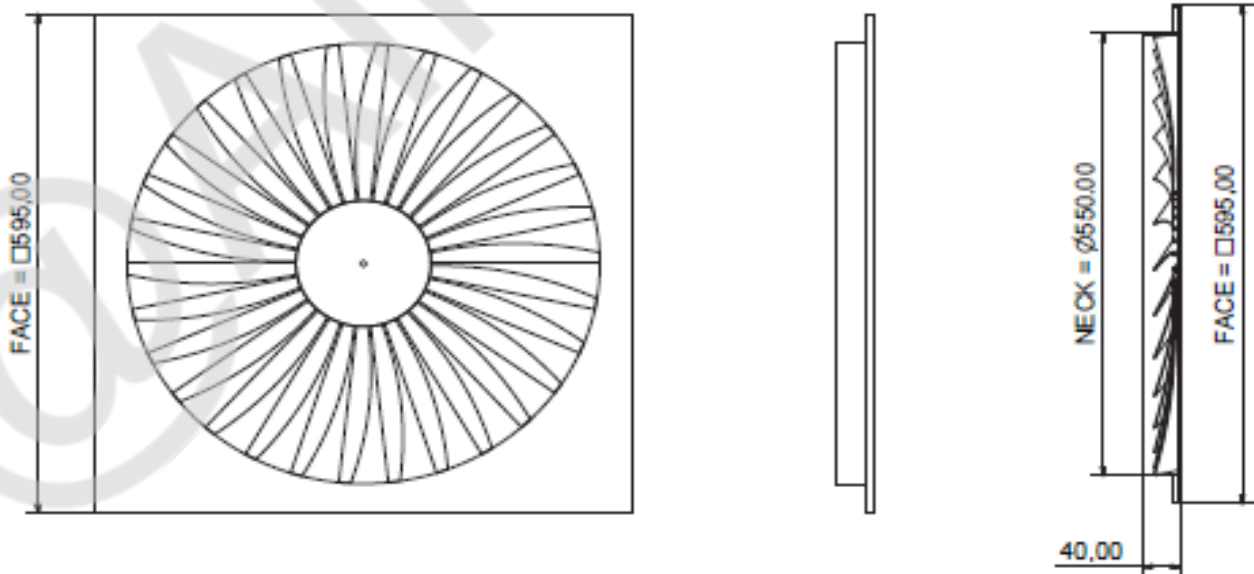
Swirl Diffusers are manufactured from steel with pressed internal blades that is suitable for lay-in ceiling applications and for surface mounting in plaster-board or similar ceilings.

Standard stock size is 595 x 595 (Lay-in). Additional sizes and styles available on request

### FINISH

Available as standard in White Powder Coat Finish. Other Powder Coat finishes are also available.

### DIMENSIONS





## OPPOSED BLADE DAMPER



### DESCRIPTION

Airlinx Opposed Blade Dampers (OBD's) are a device that is designed to regulate airflow by a series of linked blades that rotate in an opposite direction. The design of the Opposed Blade Damper maintains an even and controllable air flow over all operating positions.

Opposed Blade Dampers are most commonly used in supply and exhaust systems to control the volume of air and achieve the desired air flow. Located directly behind the register or grille the opposed blade

damper has an adjustment screw that can be accessed through the face of the register or grille.



## OPPOSED BLADE DAMPER

### CONSTRUCTION

Airlinx Opposed Blade Dampers are constructed from zincanneal.

### FINISH

Available with a Black enamel finish.

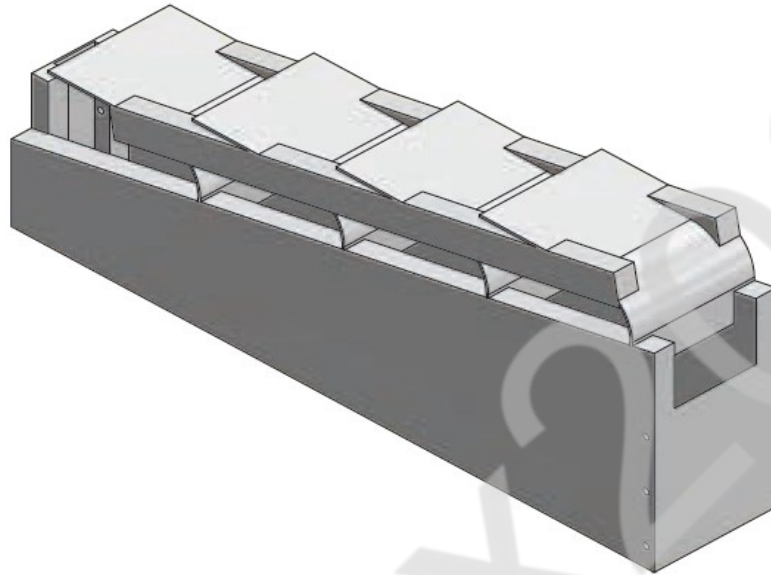
### DIMENSIONS







## STREAM SPLITTER DAMPER



### DESCRIPTION

Airlinx Stream Splitter Dampers (SSD's) are a device that is designed scoop the air passing through a duct by a series of linked blades that rotate in a parallel direction. The Stream Splitter Damper blades have an adjustment screw that is accessed through the face of the registers, where the blades can be opened to capture more air from the duct or closed for less air as required.

The design of the Stream Splitter Damper provides an even air flow across the register face and further provides regulation of air flow over all operating positions.

Airlinx Steam Splitter Dampers should be fixed where the outlet connection to the grille joins the main supply duct in order to turn the air and provide a uniform distribution of air over the face of the grille.



## STREAM SPLITTER DAMPER

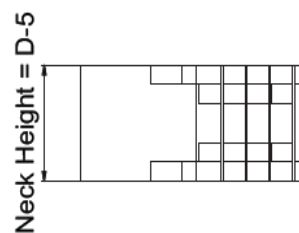
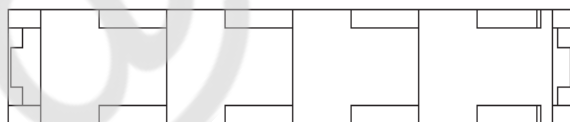
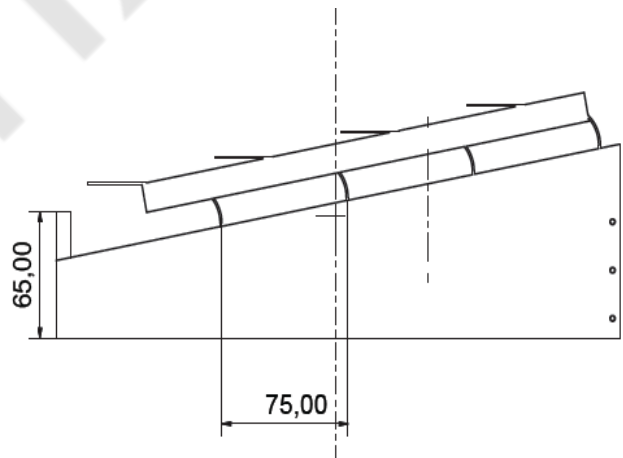
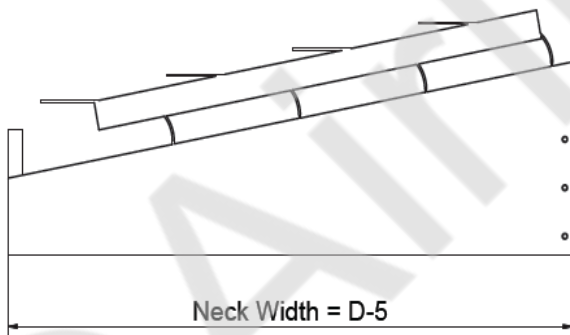
### CONSTRUCTION

Airlinx Stream Splitter Dampers are constructed from zincanneal.

### FINISH

Available with a Black enamel finish.

### DIMENSIONS



## SADDLE FOR CURVED FACE GRILLES



Saddles for Curved Face Grilles are custom made by galvanised metal sheet. It can sit on Spiral duct or oval duct.

Please contact Airlinx for any enquiries



## DIFFUSER MOUNTING FRAME

Diffuser Mounting Frames are custom made.

Please contact Airlinx for any enquiries.

Aluminium is 1mm thick



**All Metal or Aluminium Grilles  
can be Powder Coated.**

@Airlinx2024